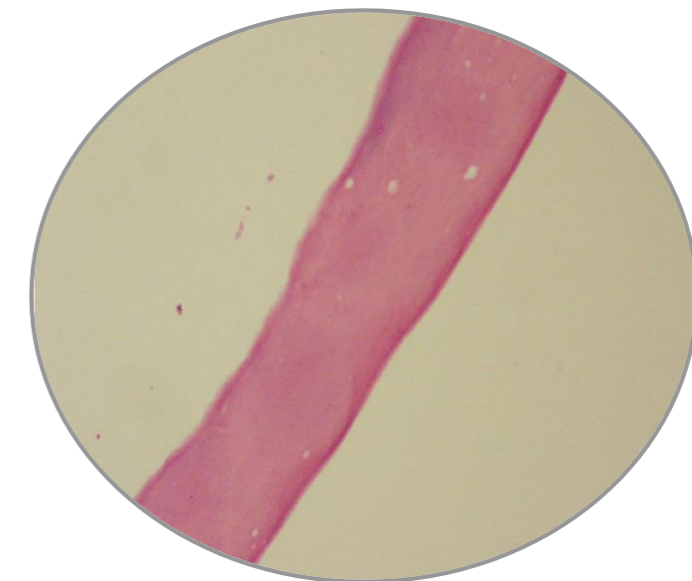
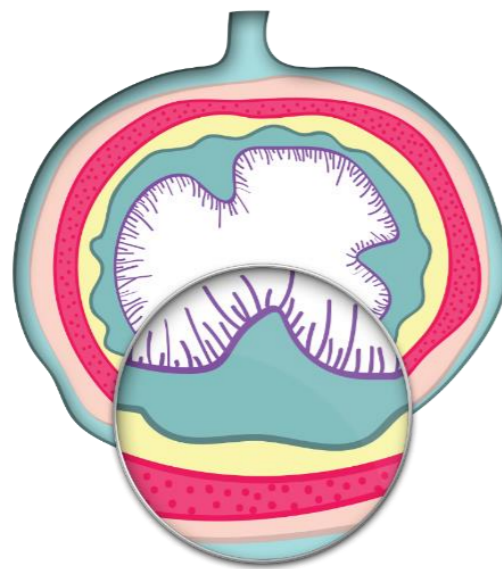


3Biomat

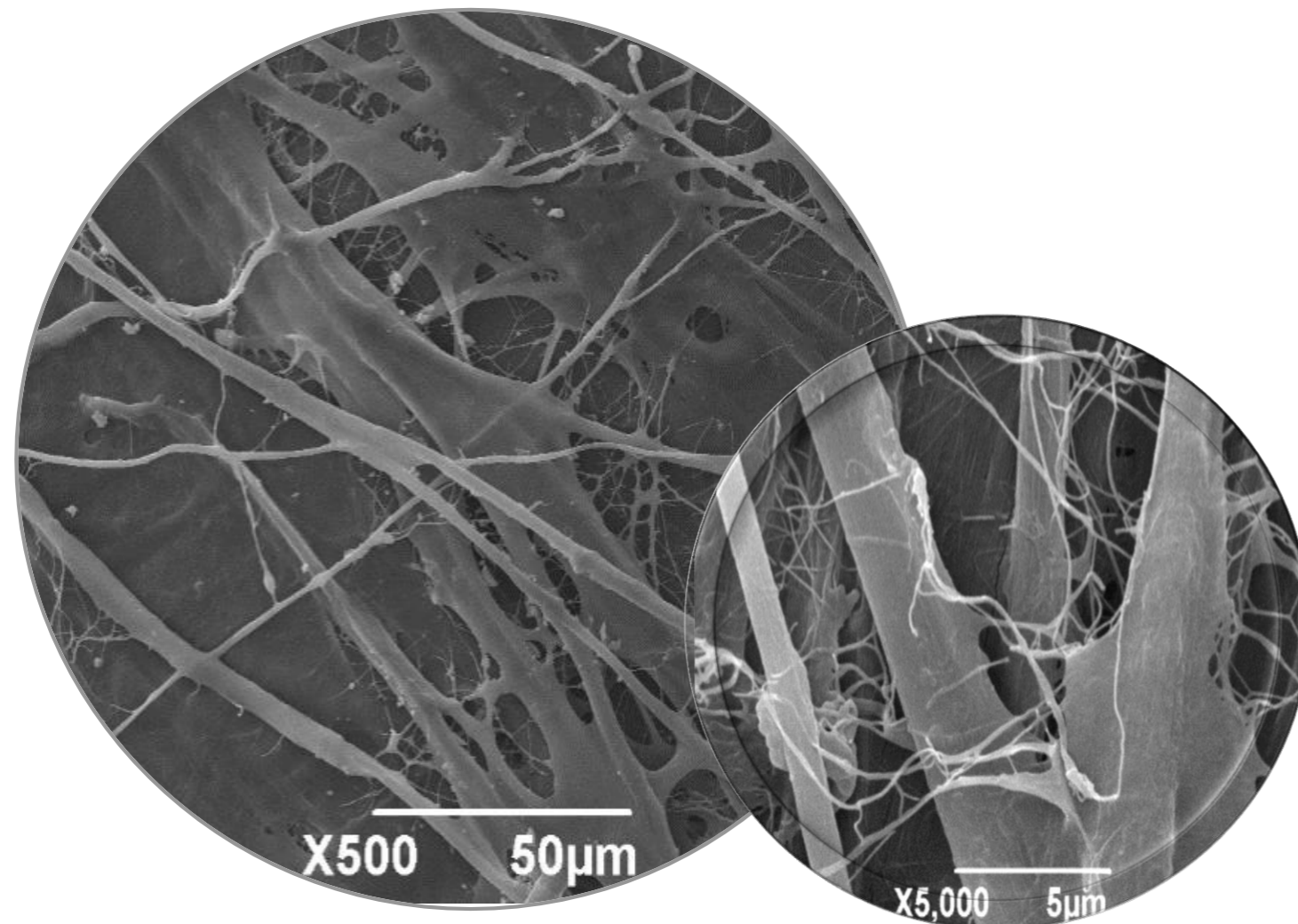
Biomec Cx – Oral/Maxilofacial

Membrana de colágeno aislada del intestino delgado de porcino, selectivamente permeable y reabsorbible. Esta barrera biológica potencializa la regeneración ósea mediante dos mecanismos:

1. Impide la invasión de tejido blando.
2. Previene la migración de las partículas del injerto óseo.

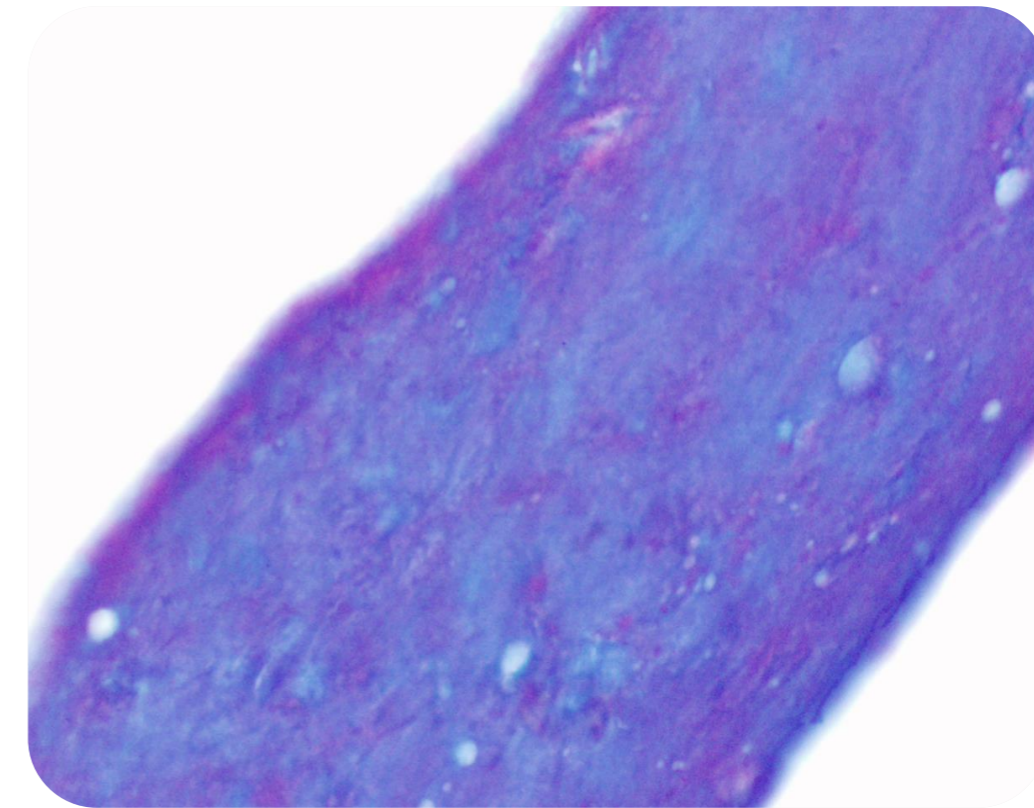


Fibras de colágeno



Microscopia electrónica de barrido

(SEM, Scanning Electron Microscopy) a 500X y a 5000X



Tinción con Tricrómico de Masson 40X

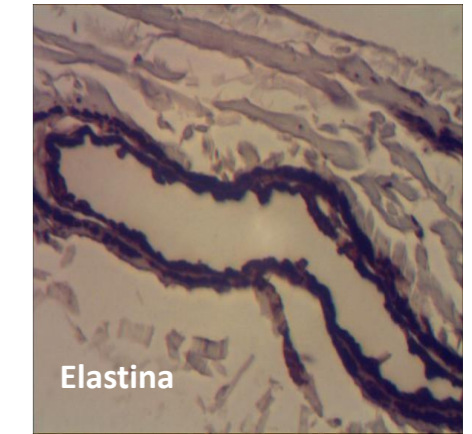
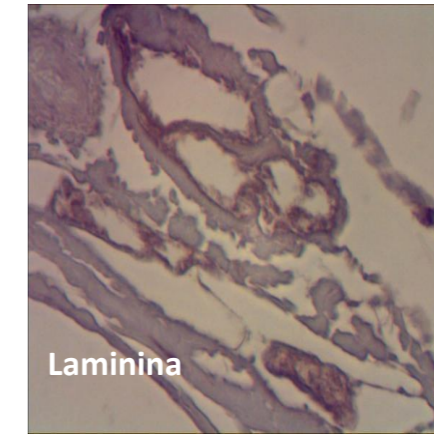
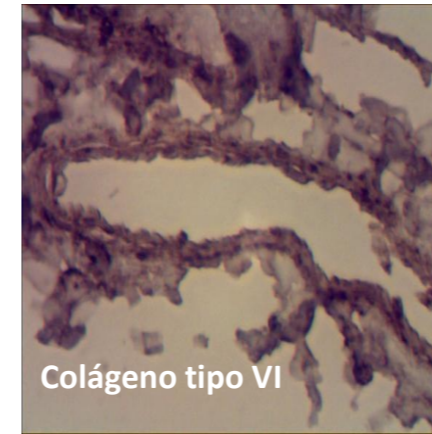
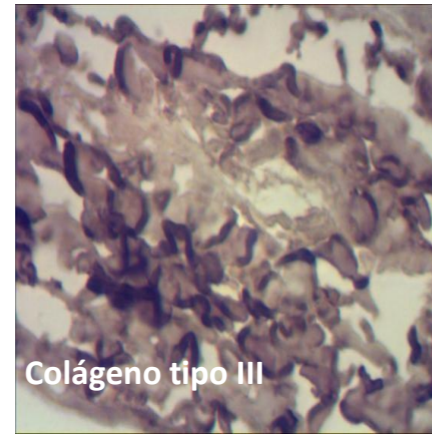
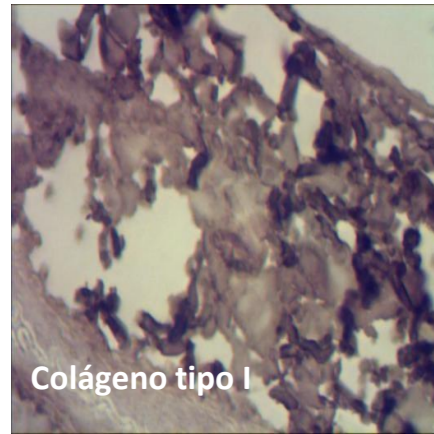
Para visualizar las fibras de colágeno (azul).

Resultados:

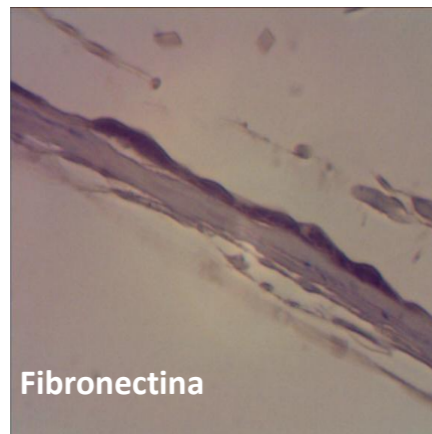
- Fibras de colágeno: azul
- Estructuras oxidadas + citoplasma: rojo

Caracterización Inmunohistoquímica (IHC)

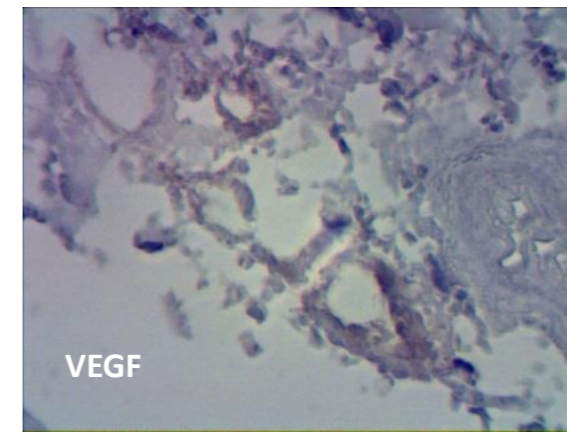
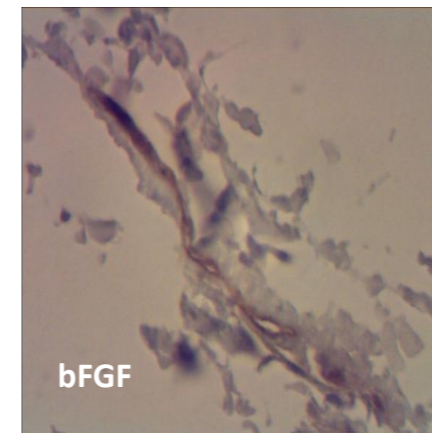
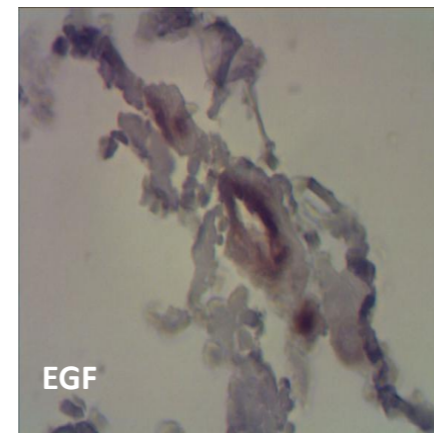
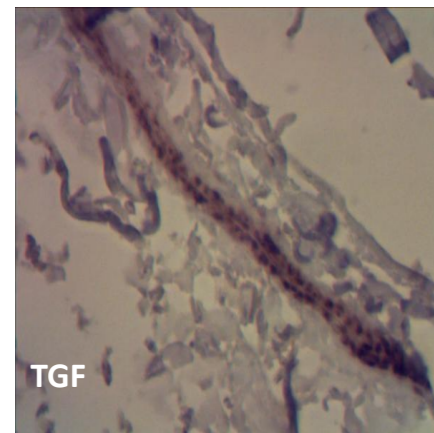
Proteínas fibrosas

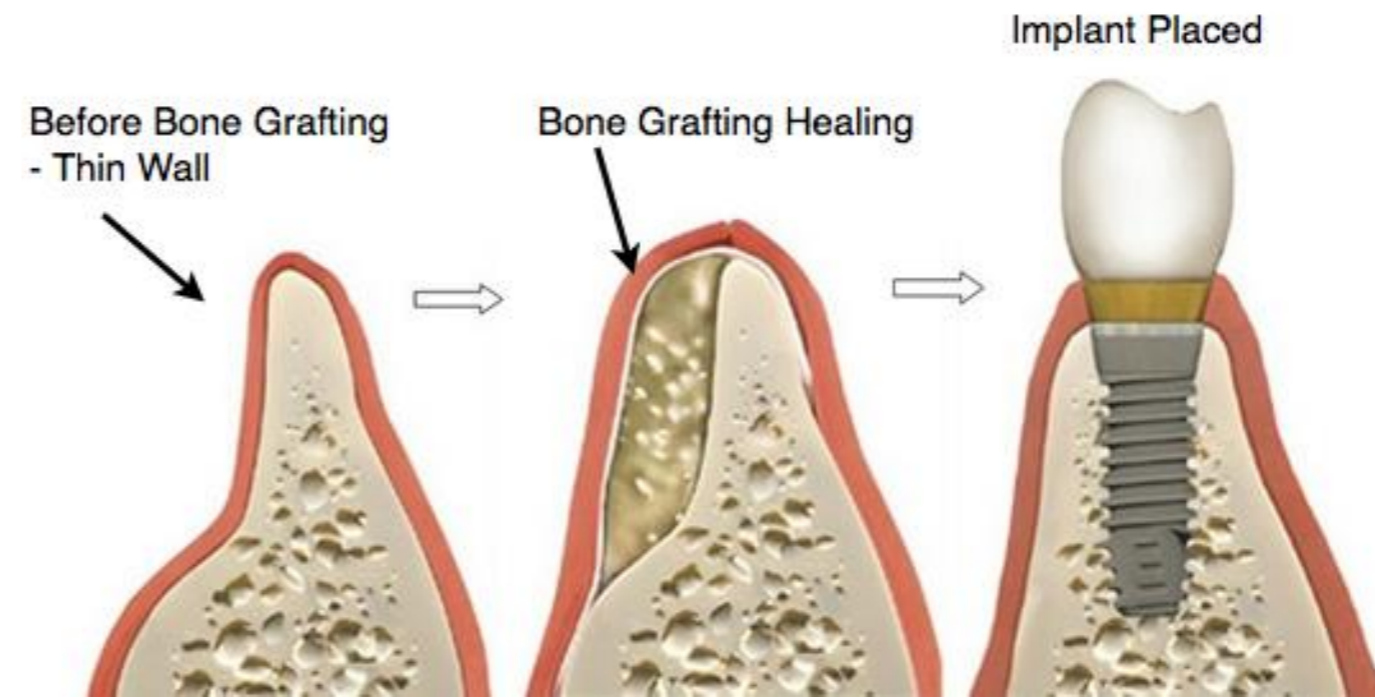


Glucosaminoglicanos



Factores de Crecimiento





Pre Prostética

Prostética

3M ESPE



CORTEX dental implants

Conexão Sistemas de Prótese

gmi Implantology Colombia

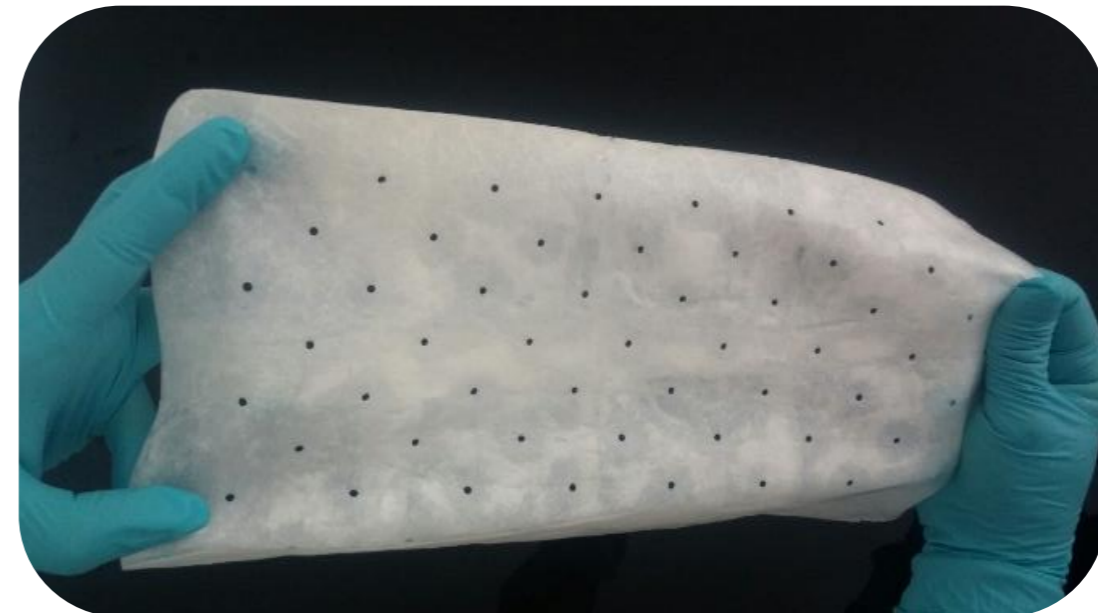
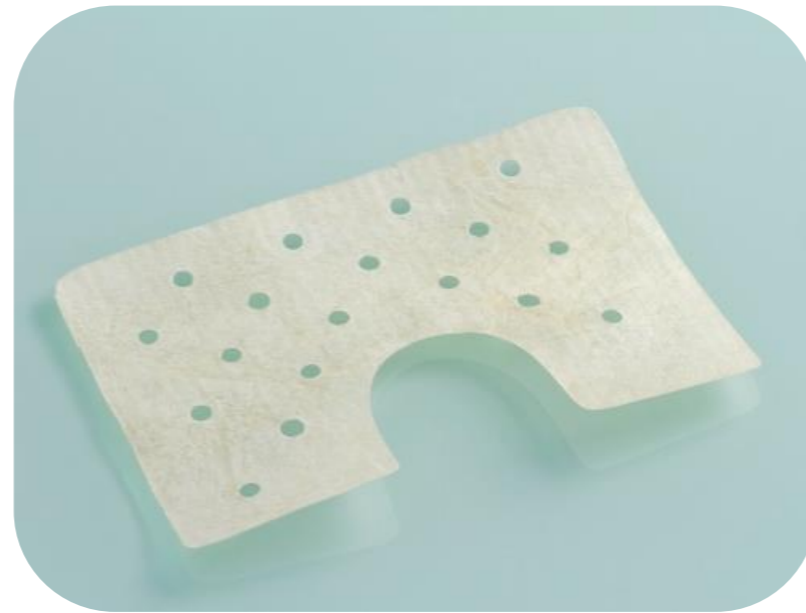
MICRODENT

S.I.N. Implant System

3Biomat

Línea de tiempo

Dispositivos Médicos de origen Biológico



2012

2013

2014



Línea de tiempo

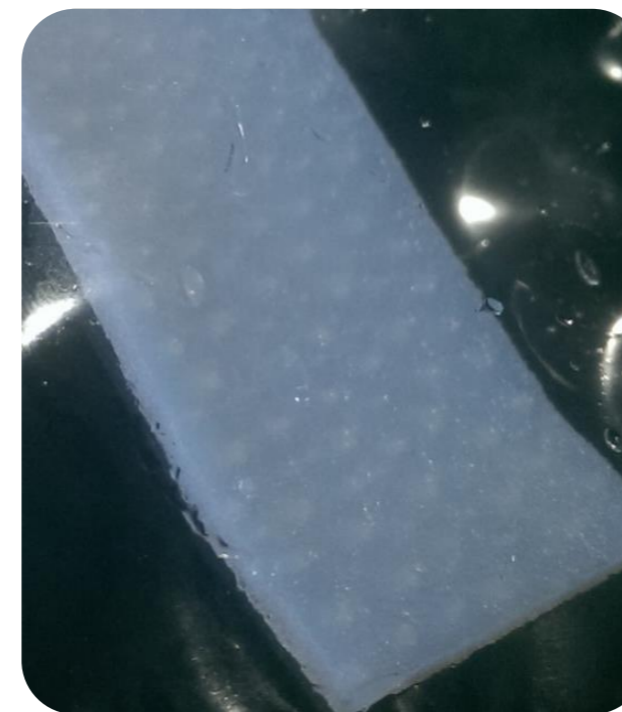
Dispositivos Médicos de origen Biológico



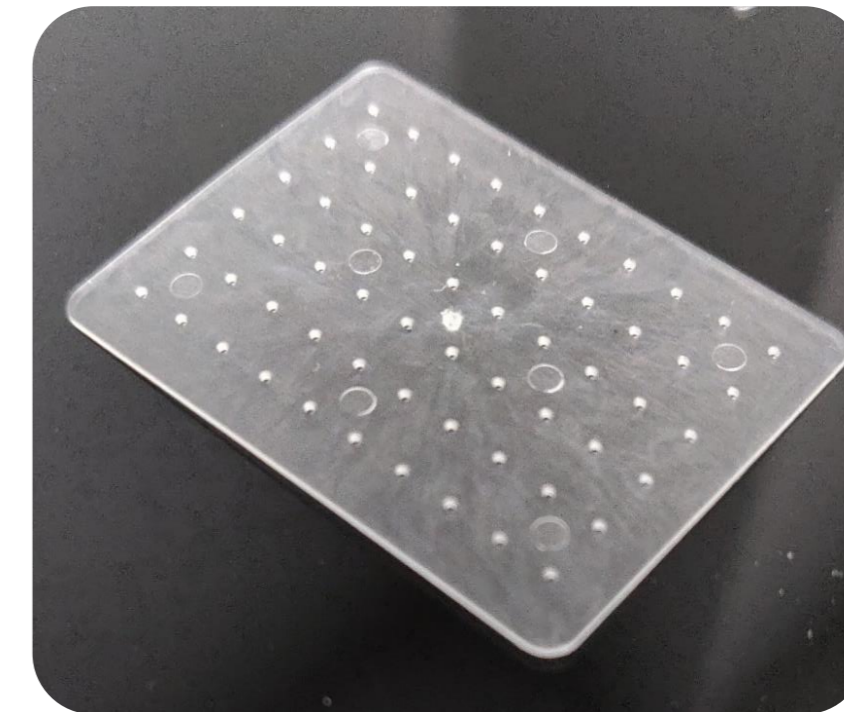
2015



2016



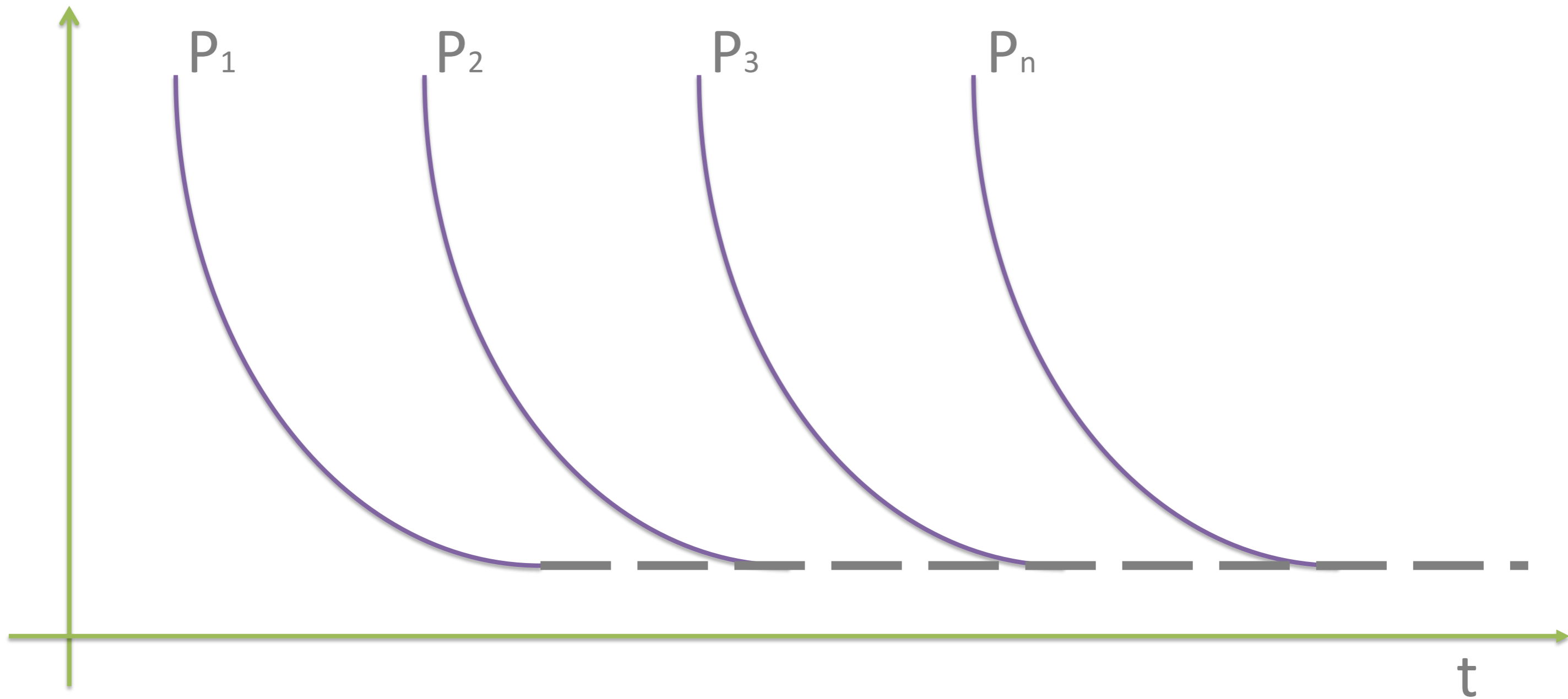
2017



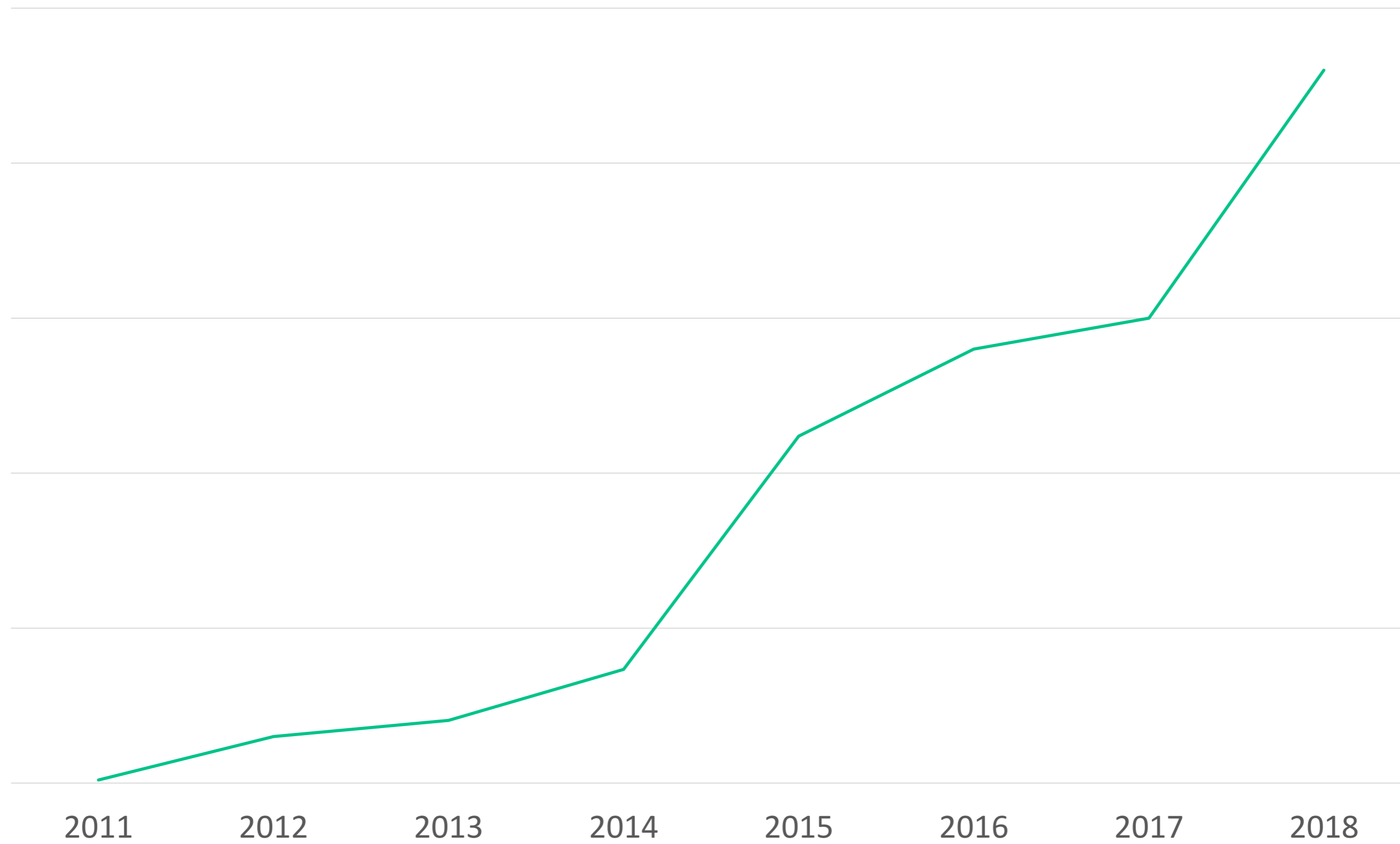
2018



Nivel Tecnológico



Evolución de las ventas



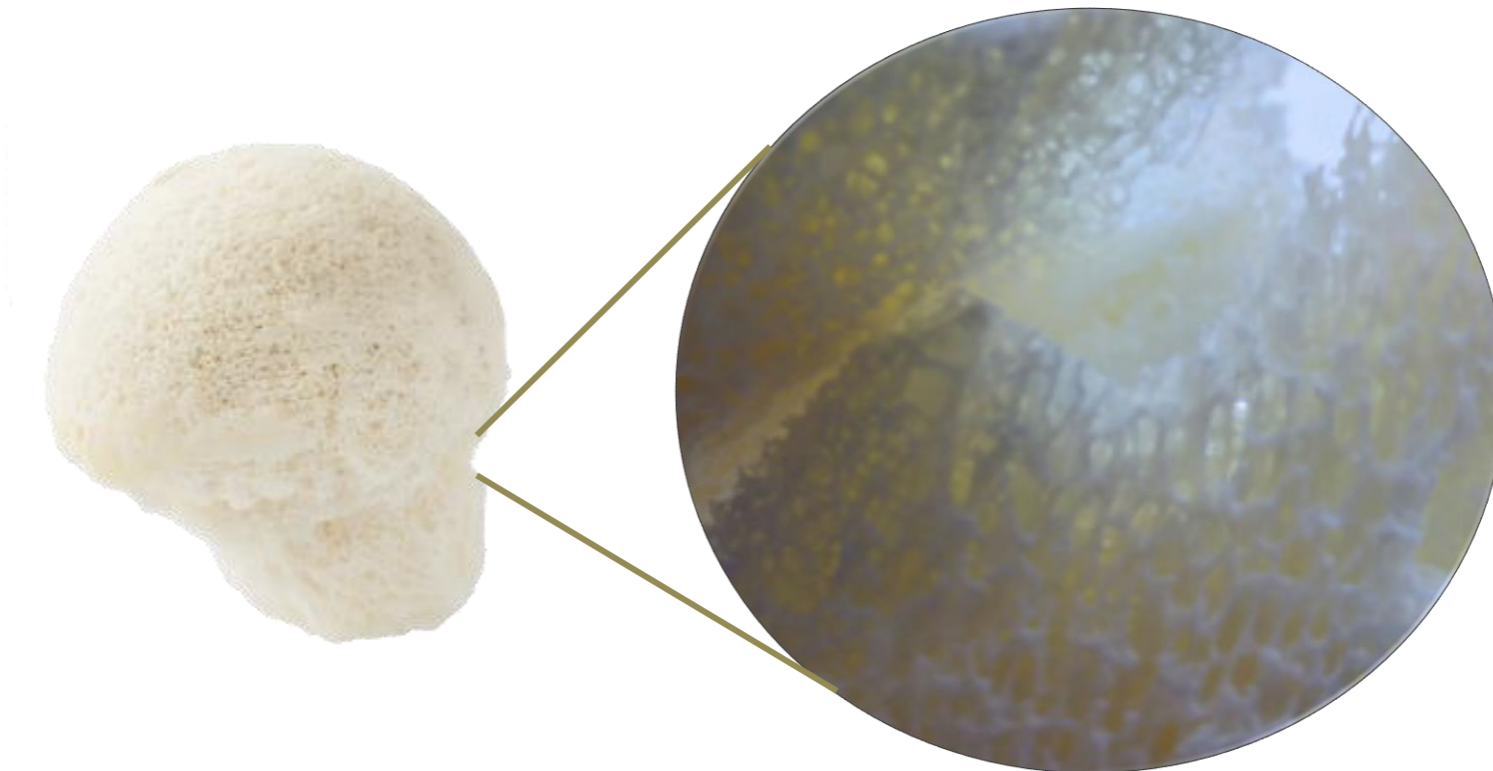
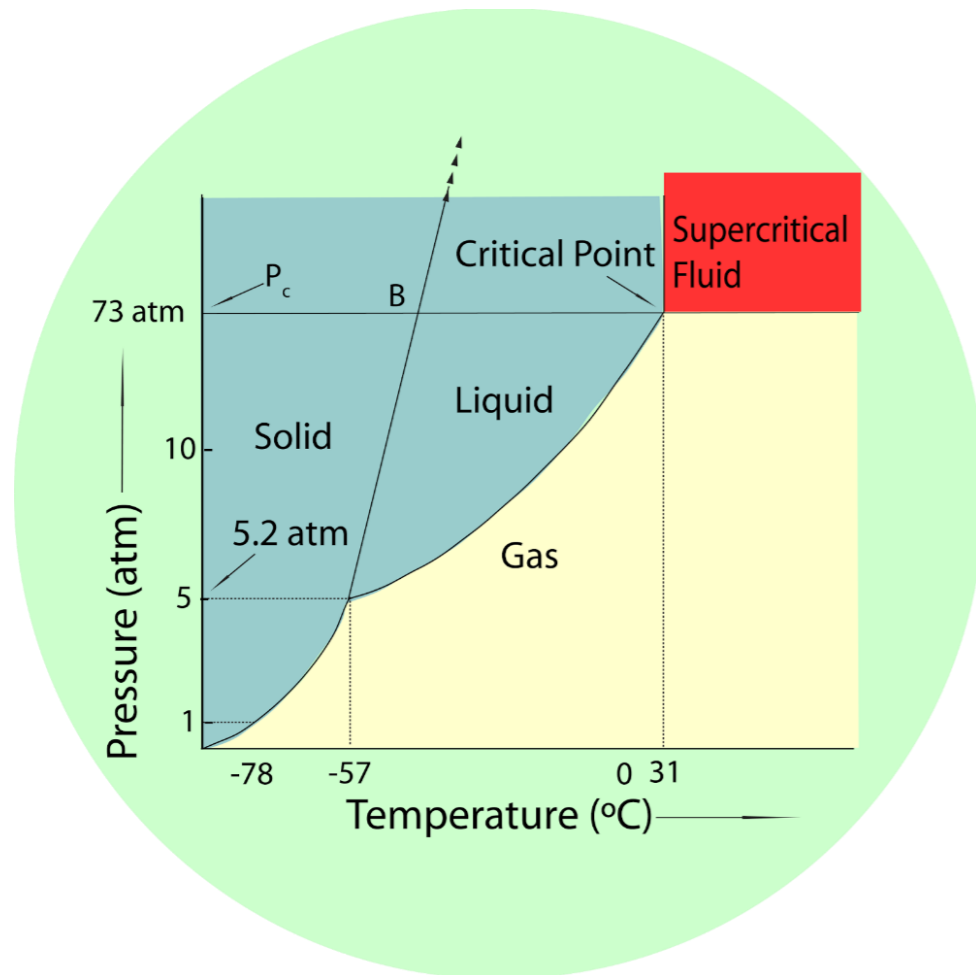
3Biomat, Colombia

New cleanroom facility completed

July 3, 2018



Carbono en estado supercrítico – scCO₂



(SEM, Scanning Un fluido supercrítico es una sustancia que se encuentra en condiciones de Presión y Temperatura por encima de su *Punto Crítico*.

El **scCO₂** actúa como un solvente retirando remanentes de tejidos, células y microorganismos en menor tiempo y con mayor eficacia

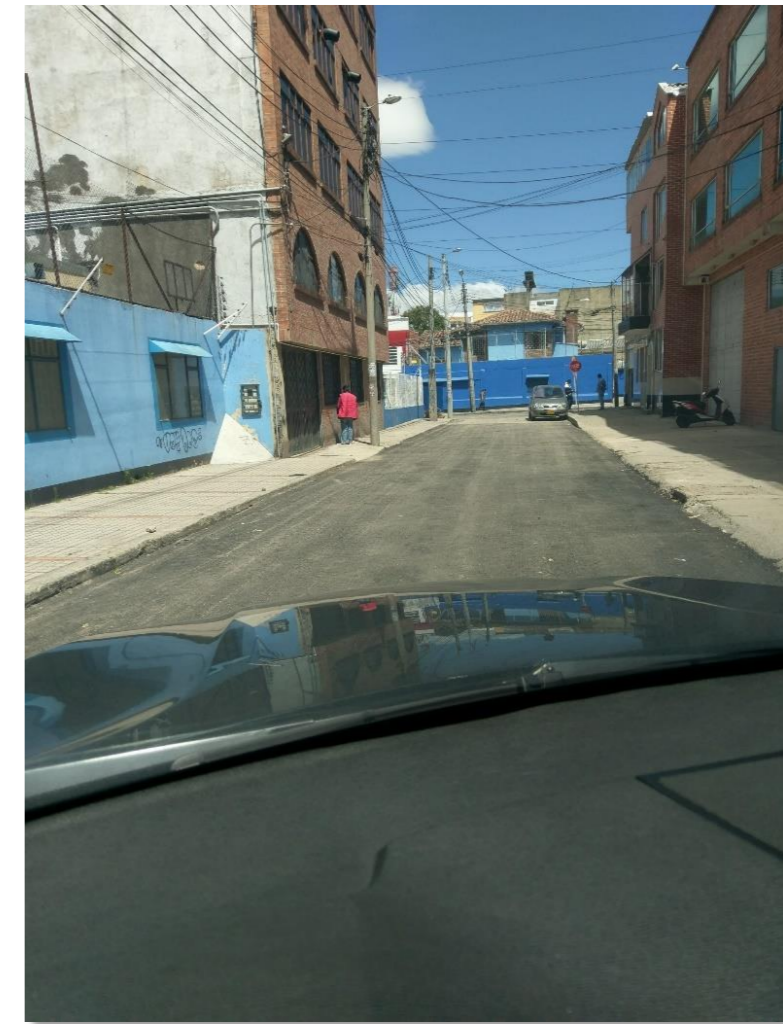
3Biomat, Colombia

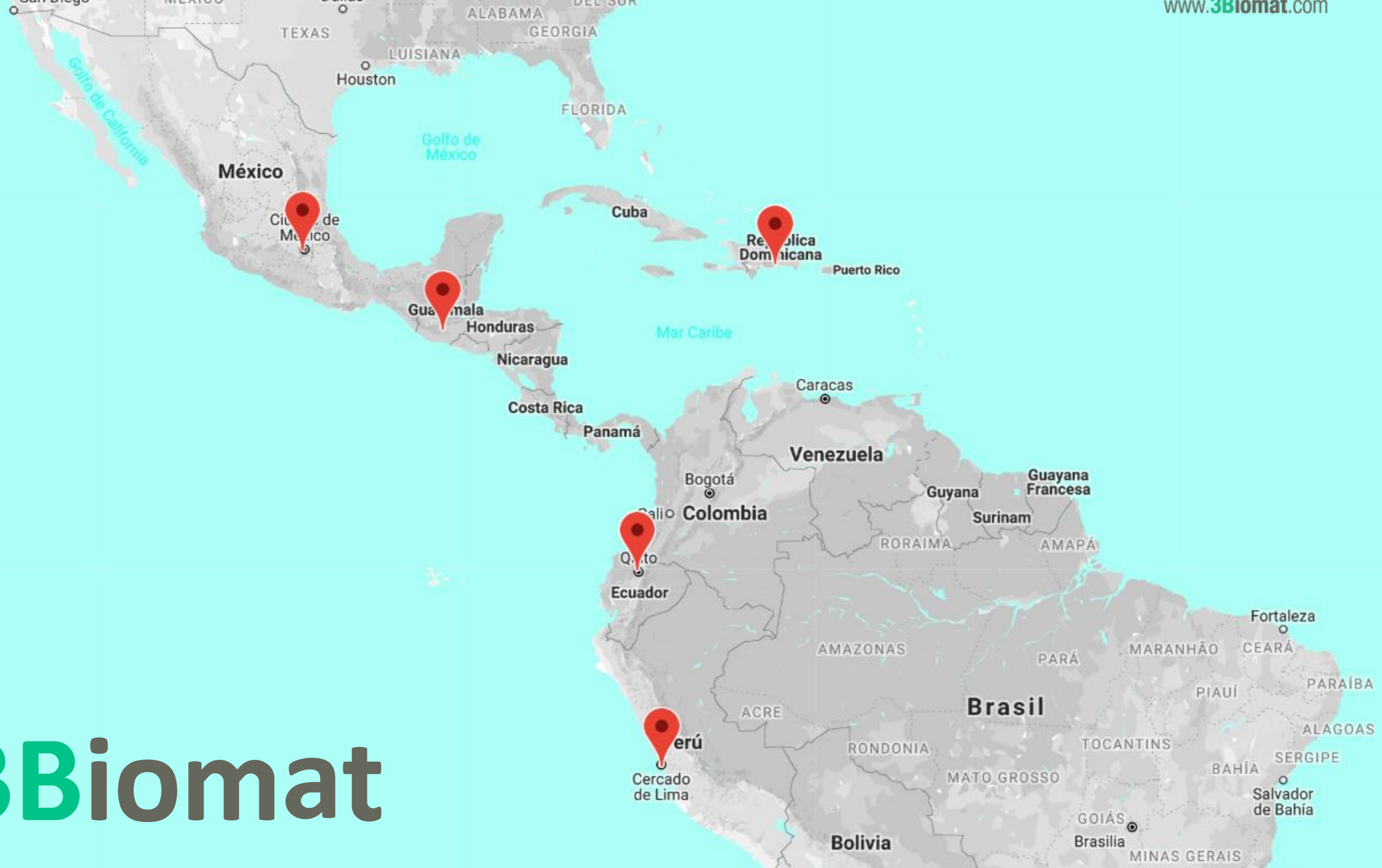
New cleanroom facility completed

Sept 18, 2019



3Biomat, Colombia





3Biomat



3Biomat